



**REGIONAL SPECIALISED METEOROLOGICAL CENTRE -
TROPICAL CYCLONES, NEW DELHI TROPICAL WEATHER OUTLOOK**

DEMS-RSMC SPECIAL TROPICAL CYCLONES NEW DELHI DATED 14.03.2022

TROPICAL WEATHER OUTLOOK FOR NORTH INDIAN OCEAN (THE BAY OF BENGAL AND ARABIAN SEA) VALID FOR NEXT 120 HOURS ISSUED AT 0600 UTC OF 14.03.2022 BASED ON 0300 UTC OF 14.03.2022.

BAY OF BENGAL:

SCATTERED LOW AND MEDIUM CLOUDS WITH EMBEDDED INTENSE TO VERY INTENSE CONVECTION OVER ANDAMAN SEA. SCATTERED LOW AND MEDIUM CLOUDS WITH EMBEDDED MODERATE TO INTENSE CONVECTION OVER SOUTHWEST ADJOINING SOUTHEAST BAY OF BENGAL SOUTH OF LAT 7.0N AND ISOLATED WEAK TO MODERATE CONVECTION OVER NORTH BAY OF BENGAL. SCATTERED LOW AND MEDIUM CLOUDS OVER EAST CENTRAL & REST OF SOUTH BAY OF BENGAL.

PROBABILITY OF CYCLOGENESIS (FORMATION OF DEPRESSION) DURING NEXT 120 HRS:

24 HOURS	24-48 HOURS	48-72 HOURS	72-96 HOURS	96-120 HOURS
NIL	NIL	NIL	NIL	NIL

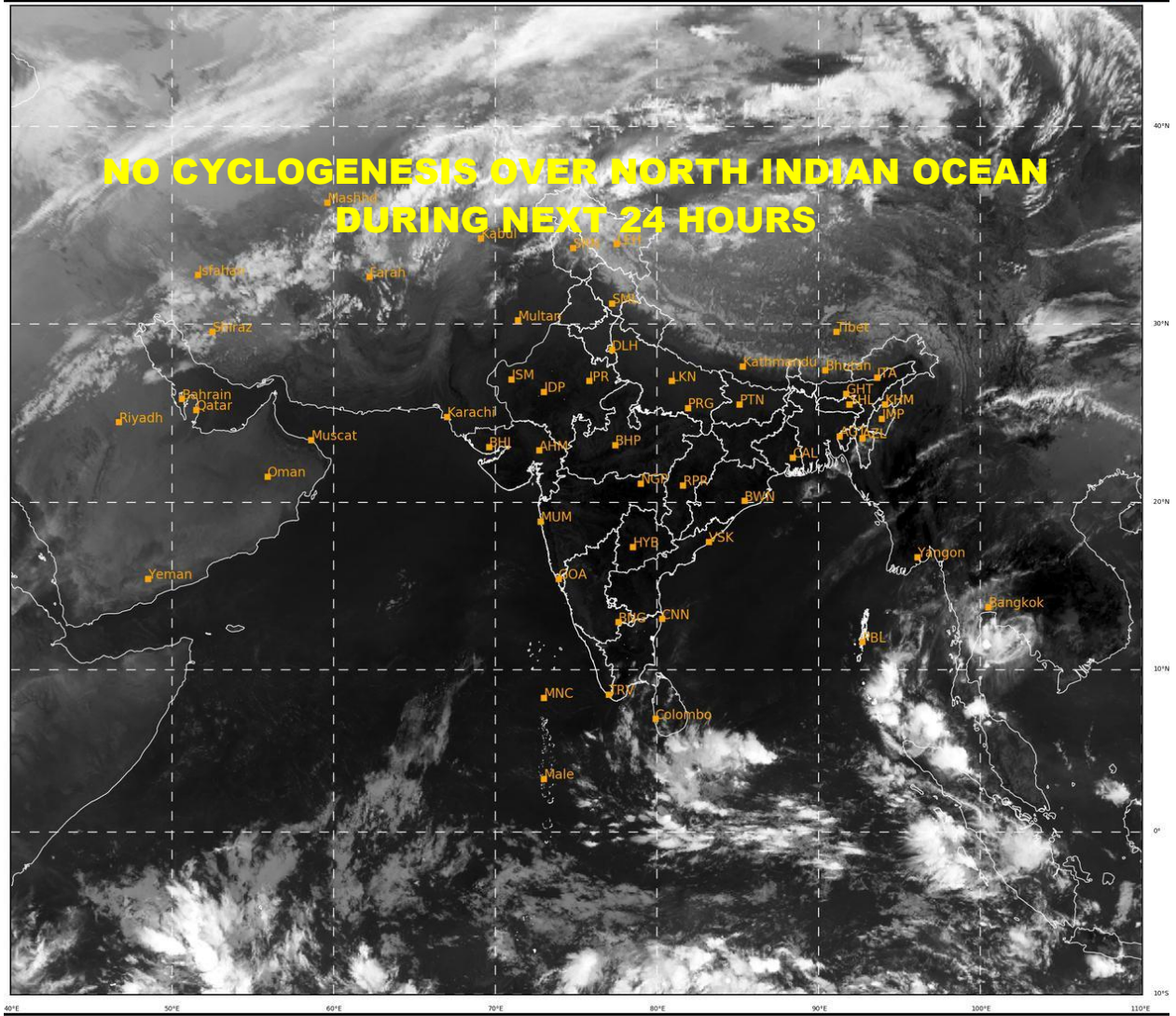
ARABIAN SEA:

SCATTERED LOW AND MEDIUM CLOUDS WITH EMBEDDED ISOLATED WEAK TO MODERATE CONVECTION OVER SOUTHEAST ARABIAN SEA AND COMORIN AREA. SCATTERED LOW AND MEDIUM CLOUDS OVER CENTRAL & SOUTHWEST ARABIAN SEA.

PROBABILITY OF CYCLOGENESIS (FORMATION OF DEPRESSION) DURING NEXT 120 HRS:

24 HOURS	24-48 HOURS	48-72 HOURS	72-96 HOURS	96-120 HOURS
NIL	NIL	NIL	NIL	NIL

REMARKS: NIL.



462

931

IMD, DELHI